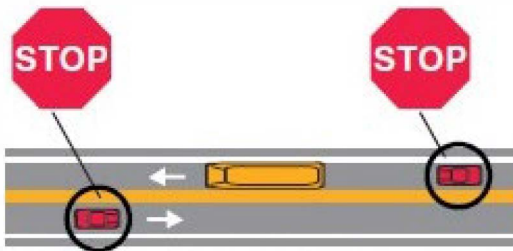


Tennessee

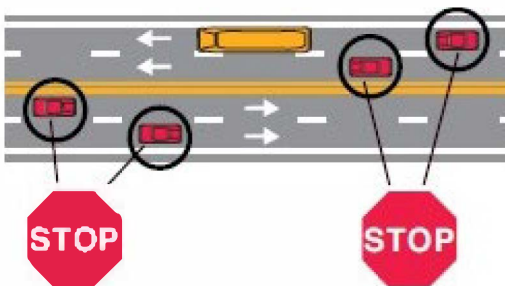
SCHOOL BUS STOP LAW



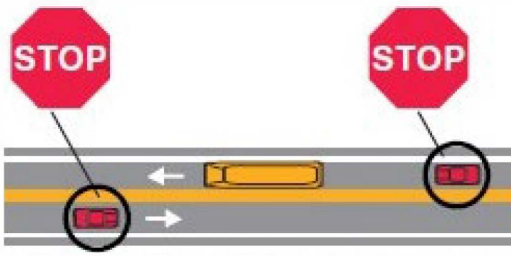
Two-lane roadway: When school bus stops for passengers, all traffic from both directions must stop.



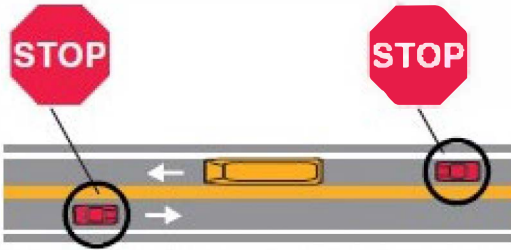
Two-lane roadway with a center turning lane: When school bus stops for passengers, all traffic from both directions must stop.



Four-lane roadway without a median separation: When school bus stops for passengers, all traffic from both directions must stop.



Any divided highway with a median separation: When school bus stops for passengers, only traffic following the bus must stop.



Roadway of four lanes or more with a center turning lane: When school bus stops for passengers, only traffic following the bus must stop.

City of Pikeville
Police Department
25 Municipal Drive
Pikeville, Tennessee 37367

Phone: (423) 447-2585
Fax: (423) 447-3072
<https://PikevilleTN.com/police>



Oct. 16-20, 2023

 **NHTSA**

Tennessee



Comprehensive Driver License Manual

tn.gov/safety

The School Bus Stop Law

Meeting A School Bus:

Any driver meeting a school bus or church bus on which the red stop warning signal lights are flashing should reduce his speed and bring the vehicle to a complete stop while the bus stop signal arm is extended. The vehicle must remain stopped until the stop arm is pulled back and the bus resumes motion.



Overtaking A School Bus:

Any driver approaching a school bus or church bus from the rear shall not pass the bus when red stop warning signal lights are flashing. The vehicle must come to a complete stop when the bus is stopped. The vehicle must remain stopped until the stop arm is pulled back and the bus resumes motion.



School Bus Warning Lights:

It is illegal to pass a school bus that has stopped to load or unload students. Never pass on the right side of the bus, as this is where the children enter or exit. This is illegal and can have tragic results. You must stop and remain stopped until:



- The bus has started moving, OR
- The driver motions for you to proceed, OR
- The visual signals are no longer activated such as the red flashing lights go off and/or the stop arm is pulled back.

YELLOW FLASHING:

When the yellow lights on the front and back of the bus are flashing the bus is preparing to stop to load or unload children. Motorists should slow down and prepare to stop their vehicles.

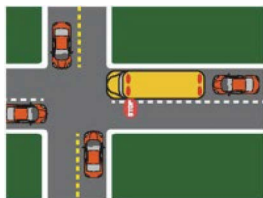


RED FLASHING:

When the red lights are flashing and the stop arm is extended this indicates that the bus HAS stopped and that children are now getting on or off the bus. Motorists must stop their cars and wait until the red flashing lights are turned off, the stop arm is withdrawn, and the bus begins moving before they start driving again.



When a school bus is stopped at an intersection to load and unload children, drivers from ALL directions are required to stop until the bus resumes motion (as shown by the red vehicles in the diagram). It is a Class-A misdemeanor and the driver can be fined between \$250 and \$1,000 for not stopping for a stopped school bus.



When driving on a highway with separate roadways for traffic in opposite directions, divided by median space or a barrier not suitable for vehicular traffic, the driver need not stop, but should proceed with caution. A turn lane in the middle of a four-lane highway is NOT considered a barrier, but a fifth lane that is suitable for vehicular traffic. Drivers meeting a stopped school bus on this type of road would be required to stop in both directions.

Pikeville Police Department

25 Municipal Drive

Pikeville, Tennessee 37367

Phone: (423) 447-2585

Fax: (423) 447-3072

<https://PikevilleTN.com/police>



Oct. 16-20, 2023

NHTSA