

Annual WATER QUALITY REPORT

Reporting Year 2025



City of Pikeville, TN
<https://PikevilleTN.com>

Your 2025 City of Pikeville Water Quality Report

Introduction

The City of Pikeville is committed to keeping you informed about the quality of your drinking water. This report is provided to you annually. It includes information describing where your drinking water comes from, the constituents found in your drinking water and how the water quality compares with the regulatory standards.



About the Water Quality Report

The excellent quality and great-tasting water that the City of Pikeville Water Department provides to its residential and commercial customers meets or exceeds regulatory standards!

Our exceptional staff continues to work hard every day – at all hours – to deliver the highest-quality drinking water without interruption. Although the challenges ahead are many, we feel that by relentlessly investing in customer outreach and education, new treatment technologies, system upgrades, and training, the payoff will be reliable, high-quality tap water delivered to you and your family.

This report, covering Jan. 1, 2025 to Dec. 31, 2025, contains data on the quality of Pikeville water, educational information, and important public health notices and contacts. The information in this Annual Water Quality Report, also known as the Consumer Confidence Report, is being provided as required by the U.S. Environmental Protection Agency.

This edition of the Annual Water Quality Report is available on the City of Pikeville's website at:
https://pikevilletn.com/treatment_plant/.

This report contains important information about your drinking water.

Translate it, or speak with someone who understands it.

Este informe contiene información muy importante. Tradúzcala o habla con alguien que lo entienda bien.

Questions about your water? Contact us for answers.

For more information or questions regarding this report, please contact Mr. Lavaughn Brock at (423) 447-3451.

Regularly scheduled meetings of the Board of Aldermen are held on the second Monday of each month at 5:30 p.m. at 25 Municipal Drive, Pikeville, Tennessee, 37367. The meetings provide an opportunity for public participation in decisions that may affect the quality of your drinking water.

The Quality of Your Water is Our Primary Concern

Where Does My Drinking Water Come From?

Pikeville's water customers are fortunate to have access to a stunning water supply sourced from five (5) wells that are drawn from ground water. Our goal is to protect our water from contaminants, and we are working with the State to determine the vulnerability of our water source to *potential* contamination. The Tennessee Department of Environment and Conservation (TDEC) has prepared a Source Water Assessment Program (SWAP) report for the untreated water sources serving water to this water system.

The SWAP Report assesses the susceptibility of untreated water sources to potential contamination. To ensure safe drinking water, all public water systems treat and routinely test their water. Water sources have been rated as reasonably susceptible, moderately susceptible or slightly susceptible based on geological factors and human activities in the vicinity of the water source.

The City of Pikeville also purchased some water on a temporary bases from Dunlap during drought conditions. The City of Pikeville and Dunlap sources are rated as moderately susceptible to potential contamination. An

explanation of Tennessee's SWAP, the Source of Water summaries, susceptibility scorings and the overall TDEC report can be viewed online at:
<https://www.tn.gov/environment/program-areas/wr-water-resources/water-quality/source-water-assessment.html>.

What Contaminants May be Present in the Sources of My Drinking Water?

The sources of drinking water (both tap water and bottled water) include rivers, lakes, streams, ponds, reservoirs, springs and wells. As water travels over the surface of the land or through the ground, it dissolves naturally-occurring minerals and, in some cases, radioactive material, and can pick up substances resulting from the presence of animals or from human activity.

Contaminants that may be present in source water include:

- **Microbial contaminants**, such as viruses and bacteria, that may come from sewage treatment plants, septic systems, agricultural livestock operations and wildlife.
- **Pesticides and herbicides**, that may come from a variety of sources such as agriculture, urban stormwater runoff, and residential uses.
- **Radioactive contaminants**, that can be naturally-occurring or be the result of oil and gas production and mining activities.
- **Inorganic contaminants**, such as salts and metals, that can be naturally-occurring or result from urban stormwater runoff, industrial or domestic wastewater discharges, oil and gas production, mining or farming.
- **Organic chemical contaminants**, including synthetic and volatile organic chemicals, that are byproducts of industrial processes and petroleum production, and can also come from gasoline stations, urban stormwater runoff, agricultural application and septic systems.



Drinking water, including bottled water, may reasonably be expected to contain at least small amounts of some contaminants. The presence of contaminants does not necessarily indicate that water poses a health risk.

More information about contaminants and potential health effects can be obtained by calling the USEPA's Safe Drinking Water Hotline (1-800-426-4791).

ABOUT CITY OF PIKEVILLE UTILITIES

We Provide Far More Than Just Water!

The City of Pikeville Utility Department is responsible for streets, public buildings, water, natural gas, sewer systems, street lighting and city maintenance.

For a name change, or to start water or natural gas service, please call the Utility Customer Service Department at (423) 447-2919.

Because Tennessee's main water sources have been severely impacted by record dry conditions in recent years, we encourage everyone to become more conservation conscious. Visit www.bewaterwise.com to learn more about water savings.

Federal and State Water Quality Regulations

WATER QUALITY ISSUES THAT COULD AFFECT YOUR HEALTH

Are There Any Precautions the Public Should Consider?

Some people may be more vulnerable to contaminants in drinking water than the general population. Immuno-compromised persons such as persons with cancer undergoing chemotherapy, persons who have undergone organ transplants, people with HIV/AIDS or other immune system disorders, some elderly, and infants can be particularly at risk from infections. These people should seek advice about drinking water from their health care providers.

USEPA/Centers for Disease Control (CDC) guidelines on appropriate means to lessen the risk of infection by *Cryptosporidium* and other microbial contaminants are available from the Safe Drinking Water Hotline (1-800-426-4791).

About Lead in Tap Water

Lead can cause serious health effects in people of all ages, especially pregnant people, infants (both formula-fed and breastfed), and young children. Lead in drinking water is primarily from materials and parts used in service lines and in home plumbing. The City of Pikeville is responsible for providing high quality drinking water and removing lead pipes



but cannot control the variety of materials used in the plumbing of your home. Because lead levels may vary over time, lead exposure is possible even when your tap sampling results do not detect lead at one point in time. You can help protect yourself and your family by identifying and

removing lead materials within your home plumbing and taking steps to reduce your family's risk. Using a filter, certified by an American National Standards Institute accredited certifier to reduce lead, is effective in reducing lead exposures. Follow the instructions provided with the filter to ensure the filter is used properly. Use only cold water for drinking, cooking, and making baby formula. Boiling water does not remove lead from

water. Before using tap water for drinking, cooking or making baby formula, flush your pipes for several minutes. You can do this by running your tap, taking a shower, doing laundry, or a load of dishes. If your home has a lead service line or galvanized pipe that requires replacement, you may need to flush your plumbing system for a longer period of time.

If you are concerned about lead in your water and wish to have your water tested, contact the City of Pikeville Water Department at 423-447-3451. Information on lead in drinking water, testing methods, and steps you can take to minimize exposure is available at <https://www.epa.gov/safewater/lead>.

Nitrate in Tap Water

Although nitrate in your drinking water never exceeds the MCL of 10 milligrams per liter (mg/L), nitrate levels may rise quickly for short periods of time because of rainfall or agricultural activity.

Nitrate in drinking water at levels above 10 mg/L is a health risk for infants of less than six months of age. Such nitrate levels in drinking water can interfere with the capacity of the infant's blood to carry oxygen, resulting in a serious illness; symptoms include shortness of breath and blueness of the skin. Nitrate levels above 10 mg/L may also affect the ability of the blood to carry oxygen in other individuals, such as pregnant women and those with certain specific enzyme deficiencies.

If you are caring for an infant, or you are pregnant, you should ask for advice from your health care provider.

Think Before You Flush!

Flushing unused or expired medicines can be harmful to your drinking water. Properly disposing of unused or expired medication helps protect you and the environment.

Keep medications out of Tennessee's waterways by disposing them in a designated pharmaceutical takeback bin. Nearly 100 takeback locations are available across the state. The Pikeville Police Department hosts an annual Drug Take Back event, but they will accept unused or expired medications at any time.

To find a convenient location please visit: <https://tdeconline.tn.gov/rxtakeback/>.

Understanding the Water Quality Tables

Water Testing Quality

To ensure that tap water is safe to drink, the U.S. Environmental Protection Agency (EPA) prescribes regulations which limit the amount of certain contaminants in water provided by public water systems. Food and Drug Administration regulations establish limits for contaminants in bottled water. The presence of contaminants does not necessarily indicate that water poses a health risk. More information about contaminants and potential health effects can be obtained by calling EPA's Safe Drinking Water Hotline (1-800-426-4791).

- **Microbiological Contaminants**, such as viruses and bacteria, may come from sewage treatment plants, septic systems, agricultural and livestock operations, and wildlife.
- **Turbidity** is a measure of the cloudiness of the water. It is used to indicate water quality and filtration effectiveness (such as whether disease-causing organisms are present).
- **Arsenic**, a gray, semi-metallic element that occurs naturally, can be found in certain types of rock and soil. Arsenic can also enter the environment through agricultural and industrial processes.
- **Inorganic Contaminants**, such as salts and metals, can be naturally occurring or result from stormwater runoff, industrial or domestic wastewater discharges, oil and gas production, mining or farming.
- **Lead and Copper** enter drinking water primarily through plumbing materials. Exposure to lead and copper may cause health problems ranging from stomach distress to brain damage.
- **Fluoride** is a mineral added to water to prevent tooth decay.
- **Chlorine** is added to water to control the growth of bacteria and viruses.
- **Radioactive Contaminants** can be naturally occurring or the result of oil, gas production and mining activities.
- **Volatile Organic Chemicals** are byproducts of industrial processes and petroleum production. They can also come from gas stations, urban stormwater runoff and septic systems.

Want Additional Information?

There's a wealth of information on the internet about Drinking Water Quality and water issues in general, especially the drought and conservation. Some good sites—both local and national—to begin your own research are:

U.S. Environmental Protection Agency
www.epa.gov/safewater

State of Tennessee Division of Water Resources
www.tn.gov/environment/program-areas/wr-water-resources-home.html

Tennessee Board of Water Quality, Oil & Gas
www.tn.gov/environment/about-tdec/boards-and-commissions/board-tennessee-board-of-water-quality--oil-and-gas.html

Drought and Water Conservation Tips
www.BeWaterWise.com
www.SaveOurWater.com

What are Water Quality Standards?

In order to ensure that tap water is safe to drink, the USEPA and DDW prescribe regulations that limit the amount of certain contaminants in water provided by public water systems. The U.S. Food and Drug Administration regulations and Tennessee law also establish limits for contaminants in bottled water that provide the same protection for public health.

Drinking water standards established by USEPA and DDW set limits for substances that may affect consumer health or aesthetic qualities of drinking water. The chart in this report shows the following types of water quality standards:

- **Maximum Contaminant Level (MCL):** The highest level of a contaminant that is allowed in drinking water. Primary MCLs are set as close to the PHGs (or MCLGs) as is economically and technologically feasible.
- **Secondary MCLs** are set to protect the odor, taste, and appearance of drinking water.
- **Maximum Residual Disinfectant Level (MRDL):** The highest level of a disinfectant allowed in drinking water. There is convincing evidence that addition of a disinfectant is necessary for control of microbial contaminants.
- **Primary Drinking Water Standard:** MCLs and MRDLs for contaminants that affect health along with their monitoring and reporting requirements and water treatment requirements.
- **Regulatory Action Level (AL):** The concentration of a contaminant, which if exceeded, triggers treatment or other requirements that a water system must follow.
- **Treatment Technique (TT):** A required process intended to reduce the level of a contaminant in drinking water.
- **Notification Level (NL):** An advisory level which, if exceeded, requires the drinking water system to notify the governing body of the local agency in which users of the drinking water reside (i.e. city council, board of directors, and county board of supervisors).

How are Contaminants Measured?

Water is sampled and tested throughout the year. Contaminants are measured in:

- parts per million (ppm) or milligrams per liter (mg/L) (*3 drops in 42 gallons – a large bathtub*)
- parts per billion (ppb) or micrograms per liter (µg/L) (*1 drop in 14,000 gallons – an average swimming pool*)
- parts per trillion (ppt) or nanograms per liter (ng/L) (*1 drop in 14,000,000 gallons – an average lake*)

What is a Water Quality Goal?

In addition to mandatory water quality standards, USEPA and DDW have set voluntary water quality goals for some contaminants. Water quality goals are often set at such low levels that they are not achievable in practice and are not directly measurable. Nevertheless, these goals provide useful guideposts and direction for water management practices. The chart in this report includes three types of water quality goals:

- **Maximum Contaminant Level Goal (MCLG):** The level of a contaminant in drinking water below which there is no known or expected risk to health. MCLGs are set by USEPA.
- **Maximum Residual Disinfectant Level Goal (MRDLG):** The level of a drinking water disinfectant below which there is no known or expected risk to health. MRDLGs do not reflect the benefits of the use of disinfectants to control microbial contaminants.
- **Public Health Goal (PHG):** The level of a contaminant in drinking water below which there is no known or expected risk to health. PHGs are set by the Tennessee Environmental Protection Agency.

City of Pikeville 2025 Water Quality

REGULATED SUBSTANCES

| SUBSTANCE (Unit of Measure) | YEAR SAMPLED | UNIT MEASUREMENT | MCL | MCLG | LEVEL DETECTED | RANGE OF DETECTIONS | VIOLATIONS | TYPICAL SOURCE |
|--|-----------------|---------------------|------------|---------|-----------------------------|------------------------|------------|---|
| Total Coliform Bacteria (RTCR) | 2025 | | TT Trigger | 0 | 0 | | NO | Naturally present in the environment |
| Turbidity ¹ | 2025 | NTU | TT | N/A | 0.15 | 0.01 - 0.15 | NO | Soil runoff |
| Copper ² | 2023 | ppm | AL=1.3 | 1.3 | 90 th % = 0.0744 | 0.0069 - 0.0991 | NO | Corrosion of household plumbing systems; erosion of natural deposits; leaching from wood preservatives. |
| Lead ² | 2023 | ppb | AL=15 | 0 | 90 th % =< 2.0 | < 2.0 - 5.7 | NO | Corrosion of household plumbing systems, erosion of natural deposits |
| Sodium | 2024 | ppm | N/A | N/A | 6.71 | | NO | Erosion of natural deposits; used in water treatment |
| Nitrate (as Nitrogen) | 2025 | ppm | 10 | 10 | 0.931 | | NO | Runoff from fertilizer use; leaching from septic tanks, sewage; erosion of natural deposits |
| TTHM ³ (Total trihalomethanes) | 2025 | ppb | 80 | N/A | LRAA 27.95 | 22.30 - 33.60 | NO | By-product of drinking water chlorination |
| Haloacetic Acids (HAA5) ³ | 2025 | ppb | 60 | N/A | LRAA 12.95 | 10.50 - 15.20 | NO | By-product of drinking water disinfection |
| Total Organic Carbon | Waived | ppm | TT | TT | | | NO | Naturally present in the environment |
| Chlorine | 2025 | ppm | MRDL 4 | MRDLG 4 | Avg. 2.42 | 0.8 - 2.8 | NO | Water additive used to control microbes. |

¹100% of our samples were below the turbidity limit.

²During the most recent round of Lead and Copper testing, 0 out of 20 households sampled contained concentrations exceeding the action level for lead.

³Locational Running Annual Average (LRAA) is the average of sample analytical results for samples taken at a particular location during the previous four calendar quarters.

Unregulated Contaminants: No unregulated contaminants were above the MRL.

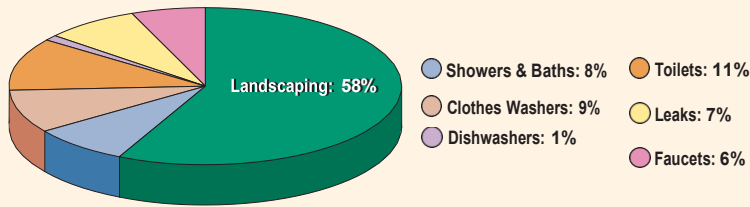
MRL - Minimum Reporting Level is the lowest analyte concentration that meets Data Quality Objectives that are developed based on the intended use of this methods.

Unregulated contaminants are those for which EPA has not established drinking water standards. The purpose of unregulated contaminant monitoring is to assist EPA in determining the occurrence of unregulated contaminants in drinking water and whether future regulation is warranted. For additional information call the Safe Drinking Water Hotline at (800) 426-4791.

Where Do We Use Water the Most?

Outdoor watering of lawns and gardens makes up approximately 60% of home water use. By reducing your outdoor water use — by either cutting back on irrigation or planting more drought tolerant landscaping — you can dramatically reduce your overall water use.

Save the most where you use the most: Make your outdoor use efficient.



Data is representative of average consumption; your water usage may vary.

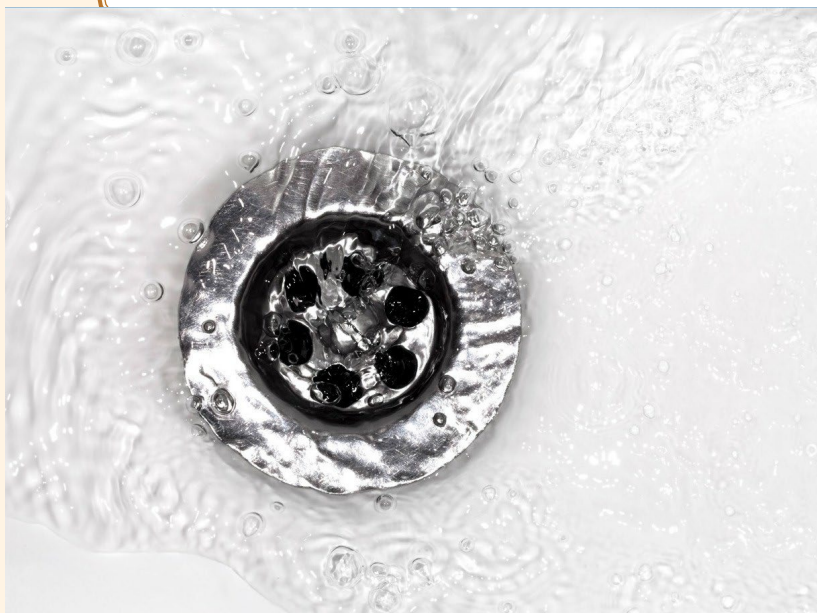
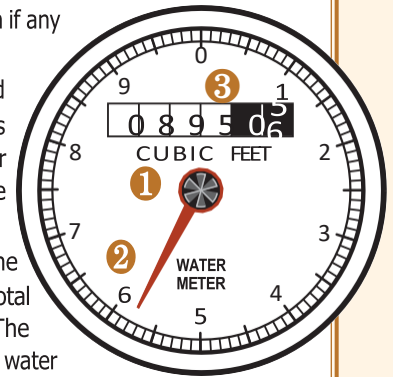


How to Read Your Residential Water Meter

Your water meter is usually located between the sidewalk and curb under a cement cover. Remove the cover by inserting a screwdriver in the hole in the lid and then carefully lift the cover. The meter reads straight across, like the odometer on your car. Read only the white numbers (0895).

If you are trying to determine if you have a leak, turn off all the water in your home, both indoor and outdoor faucets, and then check the red or black triangular dial for any movement of the low-flow indicator. If there is movement, that indicates a leak between the meter and your plumbing system.

- 1 Low-Flow Indicator** — The low flow indicator will spin if any water is flowing through the meter.
- 2 Sweep Hand** — Each full revolution of the sweep hand indicates that one cubic foot of water (7.48 gallons) has passed through the meter. The markings at the outer edge of the dial indicate tenths and hundredths of one cubic foot.
- 3 Meter Register** — The meter register is a lot like the odometer on your car. The numbers keep a running total of all the water that has passed through the meter. The register shown here indicates that 89,505 cubic feet of water has passed through this meter.



home's hot water heater. Remember to follow manufacturer's instructions and flush hot water heaters regularly. This will flush out any sediments that may have accumulated, provide good water turnover to maximize water quality, and help keep your unit in good working order.

Point of Use or Home Water Filtration Units: Be vigilant in changing or cleaning any filters or media on your home units. Always follow the manufacturers instructions. Remember, the water is only as clean as the filter allows. Improperly maintained filters can deliver very poor quality water.

Keep Your Drains Clean!

The Need to Conserve Water Remains A High Priority Throughout Tennessee

Wipe loose food and grease from dishes before washing them in the sink.

Run grease and cooking oil into a covered container and dispose of it in the garbage.

Flush only the three P's: pee, poop, and toilet paper! Flushable does not mean biodegradable!

Soak pots and pans instead of letting water run while you scrub them clean. **This both saves water and makes the job easier.**

Keep a pitcher of drinking water in the refrigerator. **This can save gallons of water every day and it's always cold!**

Plug the sink instead of running water to rinse your razor or wet your toothbrush. **This can save upwards of 300 gallons of water a month.**

Use a broom instead of a hose to clean off sidewalks and driveways. **It takes very little time to sweep and the water savings quickly adds up.**

Check your sprinkler system for leaks, overspray, and broken sprinkler heads and repair promptly. **This can save countless gallons each time you water.**

Water plants in the early morning. **It reduces evaporation and ensures deeper watering.**



**City of Pikeville
25 Municipal Drive
Pikeville, TN 37367**

<https://PikevilleTN.com>

<Facebook.com/CityofPikevilleTN>

<Instagram.com/PikevilleTN>